

MiMA[®]
Min Space,Max Performance



ELECTRIC FORKLIFT TRUCK

Three-wheel counterbalanced forklift

- TKC16
- TKC20

BANYITONG SCIENCE & TECHNOLOGY DEVELOPING CO.,LTD

Address: Crossing of Daihe Road and Cailun Road, Xinzhan district, Hefei, China
Tel: +86 551 6425 5078
E-mail: sales@mimachina.com
Web: www.mimaforklift.com

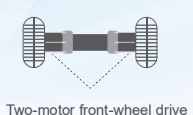
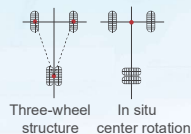
FINAL INTERPRETATION IS OWNED BY BANYITONG SCIENCE & TECHNOLOGY DEVELOPING CO.,LTD



Website



TKC series dual front-wheel drive counterbalanced forklift



Load capacity: 1600-2000 kg
Lifting height: 3000-6000mm

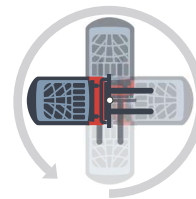


Model	TKC16	TKC20
Load capacity	1.6T	2.0T
Max. lifting height	6000mm	6000mm
Operation	Seat	Seat
Battery(V/Ah)	48/400	48/490

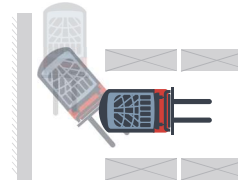
Compact Flexible Smaller aisle

TKC series counterbalanced forklift is ideal for a wide range of transport and stacking tasks. Thanks to its compact design, the manoeuvrable three-wheel forklift is particularly impressive when it comes to flexible transport in cramped storage areas. The two-motor front-wheel drive and intelligent Curtis control technology ensures consistently high performance with low consumption.

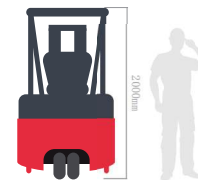
	 MK20	 TKC20	TKC20 VS MK20
Overall length	3410mm	3090mm	➔ Overall length 10% reduction
Turning radius	2100mm	1660mm	➔ Turning radius 20% reduction
Stacking aisle	3720mm	3350mm	➔ Stacking aisle 10% reduction
Service weight	3380kg	3200kg	➔ Service weight 5% reduction



In situ rotation
More flexible



Minimized turning radius
Reduce aisle width

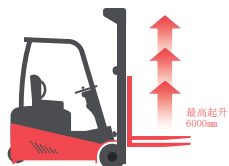


Low mast height low overhead guard height
Cold storage/service elevators available

Features

Mast Lifting

Duplex mast/triplex mast optional
Max.Lifting height:6000mm



Wide-view Mast Design

Easy to operate and observe,
improve work efficiency



Attachments Available

Strong applicability, easy installation
Applicable to various working conditions



Two-motor Front-wheel Drive

Maintenance-free double AC motors
Quicker response, Stronger power,
Longer service life



Solid Rubber Tires

Stronger road adaptability,
suitable for indoor and outdoor use



Three-wheel Design

Compact, more flexible
Dual rear-wheel, guaranteed load weight

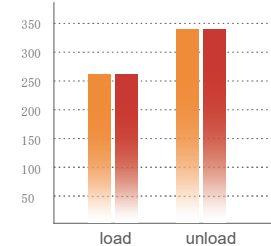


Good performance

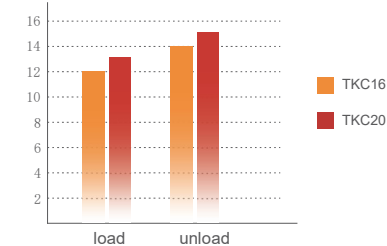
Travel speed(km/h)



Lifting speed(mm/s)

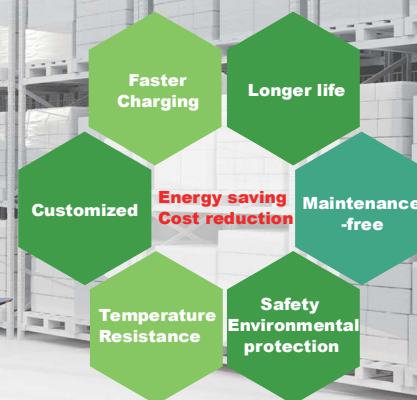


Gradeability[%(tanθ)]



Li-ion Battery (optional)

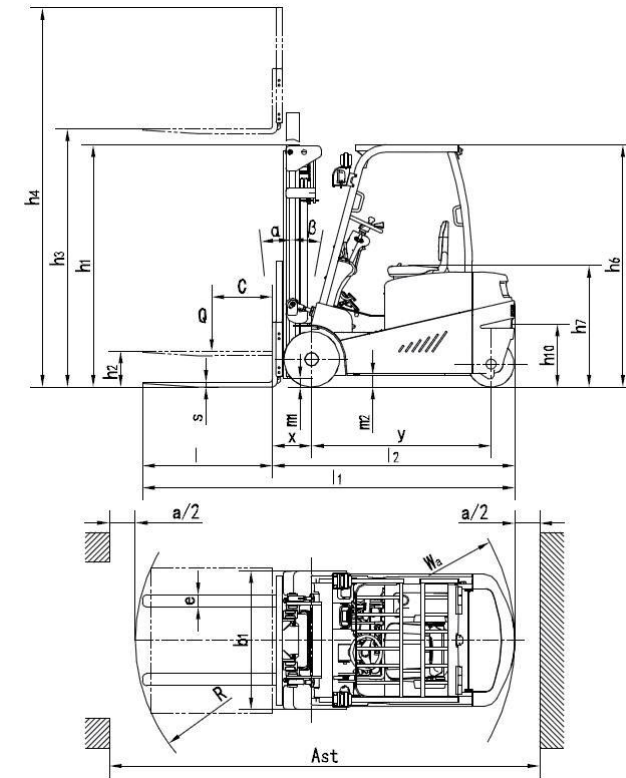
- Energy consumption >30% lower
- Enclosed sealed design, maintenance free
- LiFePO4 battery is more safer
- 5 years warranty, battery life up to 10 years
- Fast charging, 2 hours can be fully charged, no backup battery required
- Non-toxic and non-polluting, meets RoHS



[Notice] All the above configurations may include optional configurations.
Please consult relevant salesman before purchasing

Standard				
1.1	Model		TKC16	TKC20
1.2	Power Type		Battery	Battery
1.3	Operation Type		Seated	Seated
1.4	Load Capacity	Q(kg)	1600	2000
1.5	Load Center	C(mm)	500	500
1.6	Front Overhand	x(mm)	340	345
1.7	Wheelbase	y(mm)	1480	1480
Weight				
2.1	Service weight(incl.battery)	kg	3050	3200
Type				
3.1	Wheel type, drive side/load side		Solid tire	Solid tire
3.2	Loading wheel	in	15×4.5-8	15×4.5-8
3.3	Driving wheel	in	18×7-8	200/50-10
3.4	Types, front/rear		2x/2	2x/2
3.5	Tread, drive	b10(mm)	1080	1050
3.6	Tread, road	b11(mm)	180	180
Size				
4.1	Gantry tilt range, front/rear	$\alpha/\beta(^{\circ})$	6/6	6/6
4.2	Height of mast closed	h1(mm)	1995	1995
4.3	Full free lifting height	h2(mm)	145	140
4.4	Lifting height	h3(mm)	3000	3000
4.5	Height of mast open	h4(mm)	4030	4030
4.6	Overhead guard height	h6(mm)	2000	2000
4.7	Seat height	h7(mm)	1055	1055
4.8	Overall length	L1(mm)	3085	3090
4.9	Length to fork face	L2(mm)	2015	2020
4.10	Overall width	b1/b2(mm)	1250	1250
4.11	Fork Dimensions	l/e/s(mm)	1070/100/35	1070/122/40
4.12	Installation level		2A	2A
4.13	Fork carriage width	b3(mm)	1040	1040
4.14	Width across forks	b5(mm)	222-1000	222-1000
4.15	Mast clearance	m1(mm)	90	90
4.16	Body clearance	m2(mm)	100	100
4.17	Aisle width for pallet 1000*1200 crossway	Ast(mm)	3350	3350
4.18	Turning radius	Wa(mm)	1660	1660
Performance				
5.1	Driving speed(load/unload)	km/h	12/13	12/13
5.2	Lifting speed(load/unload)	mm/s	260/340	260/340
5.3	Max.climbing ability(S2-5min)	%(tan θ)	12/14	13/15
5.4	Brake type		Hydraulic	Hydraulic
Drive				
6.1	Driving motor(S2-60min)	kw	AC4.8×2	AC4.8×2
6.2	Lifting motor.(S3-15%)	kw	AC8.6	AC8.6
6.3	Battery Voltage/capacity	V/Ah	48/400	48/490
6.4	Battery weight	kg	645	750
Optional				
7.1	Lithium battery configuration	V/Ah	48/300	48/460

2D View



Load Chart

