

Product Name: Reach Truck (Wide Body 4-way)

Product Model: MQD30

File Category: Product Specification

Edit:

Revision:

Verify:

Standardization:

Approve:

MQD30

MQD30 series forklift (wide-body four-way) is a reach truck used for handling and stacking long materials, with a lifting height of 3-8m. Compared with the common reach truck, it has the functions of four-way driving and in situ rotation, so it is suitable for the handling and stacking of long materials and bulk materials, such as profiles, plates, wood, molds and curtain walls.

Applicable to:

- Stacking in narrow aisle.
- Stacking for long materials and bulk materials.



MiMA Electric Forklift Features

1. Maintenance-free AC drive system makes the whole vehicle respond more quickly and accurately.
2. Ultra-wide fork rack and automatic distance adjustment function of fork make the forklift adapt to long material handling with different needs.
3. Electromagnetic proportional valve, with diverse functions, comfortable operation, safety and stability.
4. Ergonomically designed cab provides wide operating space and excellent all-round vision.
5. Hydraulic steering, strong road sense, stable operation, providing stable and reliable steering performance when the whole vehicle is driving at high speed.
6. The suspension seat with OPS is adopted, which is comfortable to ride, and when the operator leaves the seat, all actions of the whole vehicle stop immediately, which is safe to operate.

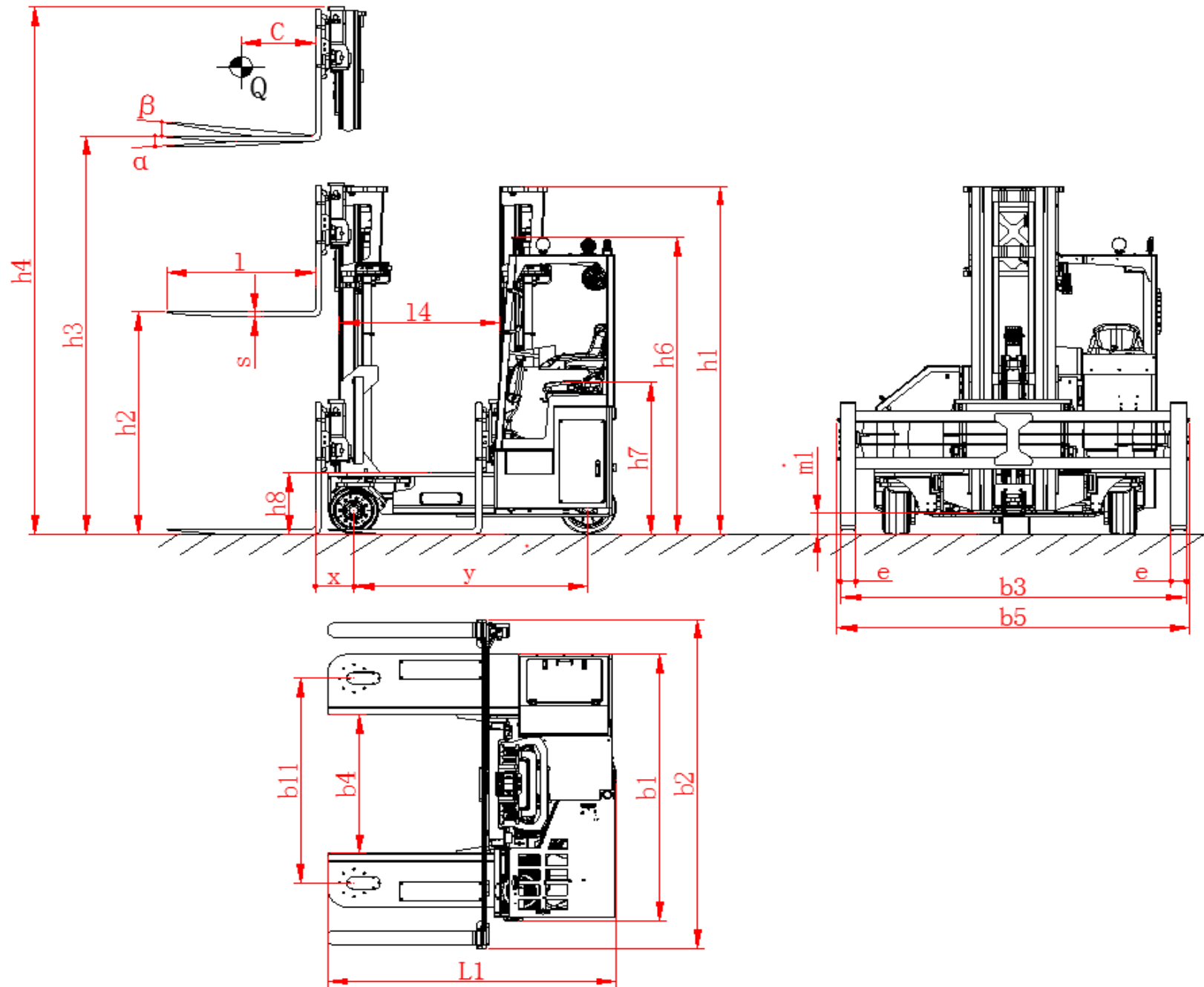


MiMA® 米玛®

Technical data

Characteristics	1,1	Manufacturer		MiMA
	1,2	Model		MQD30
	1,3	Power Type		Battery
	1,4	Operation		Seated
	1,5	Load capacity	Q(kg)	3000
	1,6	Load center distance	C(mm)	600
	1,7	Front overhang	x(mm)	312
	1,8	Wheelbase	y(mm)	1895
Weights	2,1	Service weight(incl. battery)	kg	5580 ^②
	2,2	Axle loading, laden front/rear	kg	/
	2,3	Axle loading, unladen front/rear	kg	/
Wheels	3,1	Tyre type, front/rear		Solid rubber
	3,2	Tyre size, front	mm	φ405×220
	3,3	Tyre size, rear	mm	φ457×229
	3,4	Wheels, number front/rear (X=driven)		2 / 1X
	3,5	Tyre size, rear	b10(mm)	0
	3,6	Tyre size, front	b11(mm)	1776
Dimensions	4,1	Fork tilt angle front/rear	α/β(°)	2/5
	4,2	Mast retracted height	h1(mm)	3020
	4,3	Free lift height	h2(mm)	1884
	4,4	Lift height	h3(mm)	5500
	4,5	Mast extended height	h4(mm)	6650
	4,7	Cabin height (with/without light)	h6(mm)	2571/2440
	4,8	Seat height	h7(mm)	1310
	4,9	Support arms height	h8(mm)	530
	4,10	Overall length(without guide wheel)	L1(mm)	2330
	4,11	Overall width	b1/b2(mm)	2300/2860
	4,12	Fork dimensions	l/e/s(mm)	1200/125/50
	4,13	Fork carriage width	b5(mm)	2860
	4,14	Fork outside spread	b3(mm)	560~2800
	4,15	Support arms inner width	b4(mm)	1200
4,16	Reach distance	l4(mm)	1300	
4,17	Ground clearance below mast (without camera)	ml(mm)	150	
Performance	5,1	Sideways travelling speed, laden/unladen	km/h	7.0~8.0
	5,2	Straight travelling speed, laden/unladen	km/h	5.0~6.0
	5,3	Lift speed, laden/unladen	mm/s	180/300
	5,4	Lowering speed, laden/unladen	mm/s	300/220
	5,5	Straight driving gradeability, laden/unladen(S2-5min)	%(tanθ)	8/10
	5,6	Sideways driving gradeability, laden/unladen(S2-5min)	%(tanθ)	8/10
	5,7	Service break(front/rear)		Mechanical/Electromagnetic
Drive	6,1	Drive motor, rating S2=60	kw	9.1AC
	6,2	Lift motor, rating S3=15%	kw	12.8AC
	6,3	Battery voltage/nominal capacity	V/Ah	48/560
	6,4	Battery weight	kg	900
	6,5	Steering system		Hydraulic
Others	7,1	Battery replacement method		Hoisting/ Side pull
①Standard with fork positioner, optional distribution fork sensing function. ②The standard vehicle data will change according to different configurations.				

2D view



Mast Specification

Duplex Mast										
Model	MQD30	MQD3030	MQD3033	MQD3035	MQD3037	MQD3040	MQD3045			
Lift height	h3(mm)	3000	3300	3500	3700	4000	4500			
Mast extended height	h4(mm)	4200	4500	4700	4900	5200	5700			
Mast retracted height	h1(mm)	2750	2900	3000	3100	3250	3500			
Free Lift height	h2(mm)	0	0	0	0	0	0			
Triplex Full Free Mast										
Model	MQD30SQ	MQD3050SQ	MQD3055SQ	MQD3060SQ	MQD3065SQ	MQD3070SQ	MQD3075SQ	MQD3080SQ		
Lift height	h3(mm)	5000	5500	6000	6500	7000	7500	8000		
Mast extended height	h4(mm)	6150	6650	7150	7650	8150	8650	9150		
Mast retracted height	h1(mm)	2853	3020	3187	3354	3521	3688	3955		
Free Lift height	h2(mm)	1716	1884	2050	2216	2384	2550	2816		

Note[1]:The above series of mast are equipped with the fork positioner as standard, and the parameters in the table remain unchanged;

[2]: The maximum lifting height of duplex mast of MQD30 is 4.5m,and the maximum lifting height of triplex full free mast is 8.0m;

[3]: Set the camera when the lifting height is more than or equal to 5 meters;

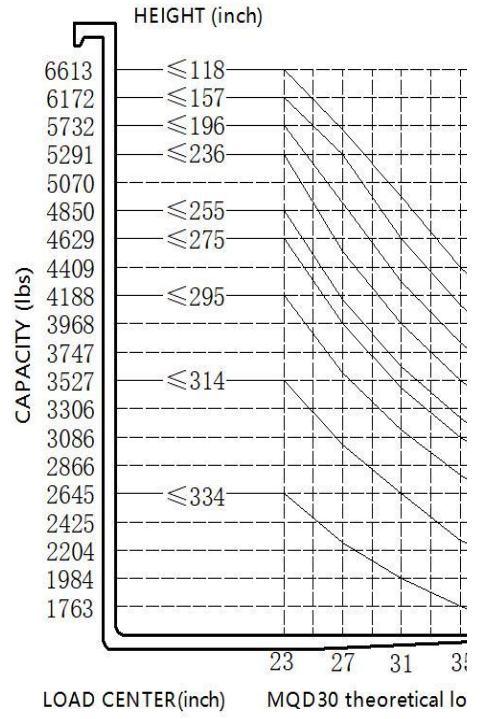
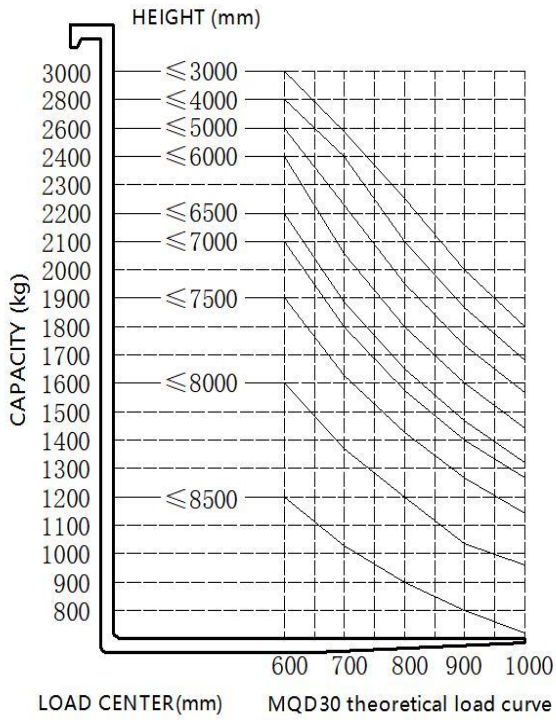
[4]: If you need special customized products, please contact us.

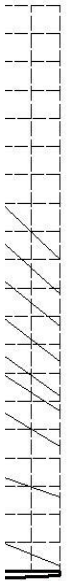
Configurations

No.	Name	Specification	Brand
1	gear rotary pump	TIANJIN SHIMADZU	TIANJIN SHIMADZU
2	Electromagnetic proportional valve	50L/min	MIMA Customized
3	Electronic control assembly		American CURTIS
4	Driving motor	9.1KW (AC)	
5	Hoisting motor	12.8KW (AC)	
6	Contacter		albright
7	Battery assembly	48V/560Ah	TORCH/TIANNENG
8	plug-in component		ANPU



Load Chart





5 39

rad curve